

PROJECT:

FRANKLIN AND CAPITOL PLAZA WINDOW AND DOOR UPGRADE - PHASE IV

FRANKLIN PLAZA
1555 W. FRANKLIN ST.
BOISE, ID. 83702

CAPITOL PLAZA
700 CUNNINGHAM PL.
BOISE, ID. 83702

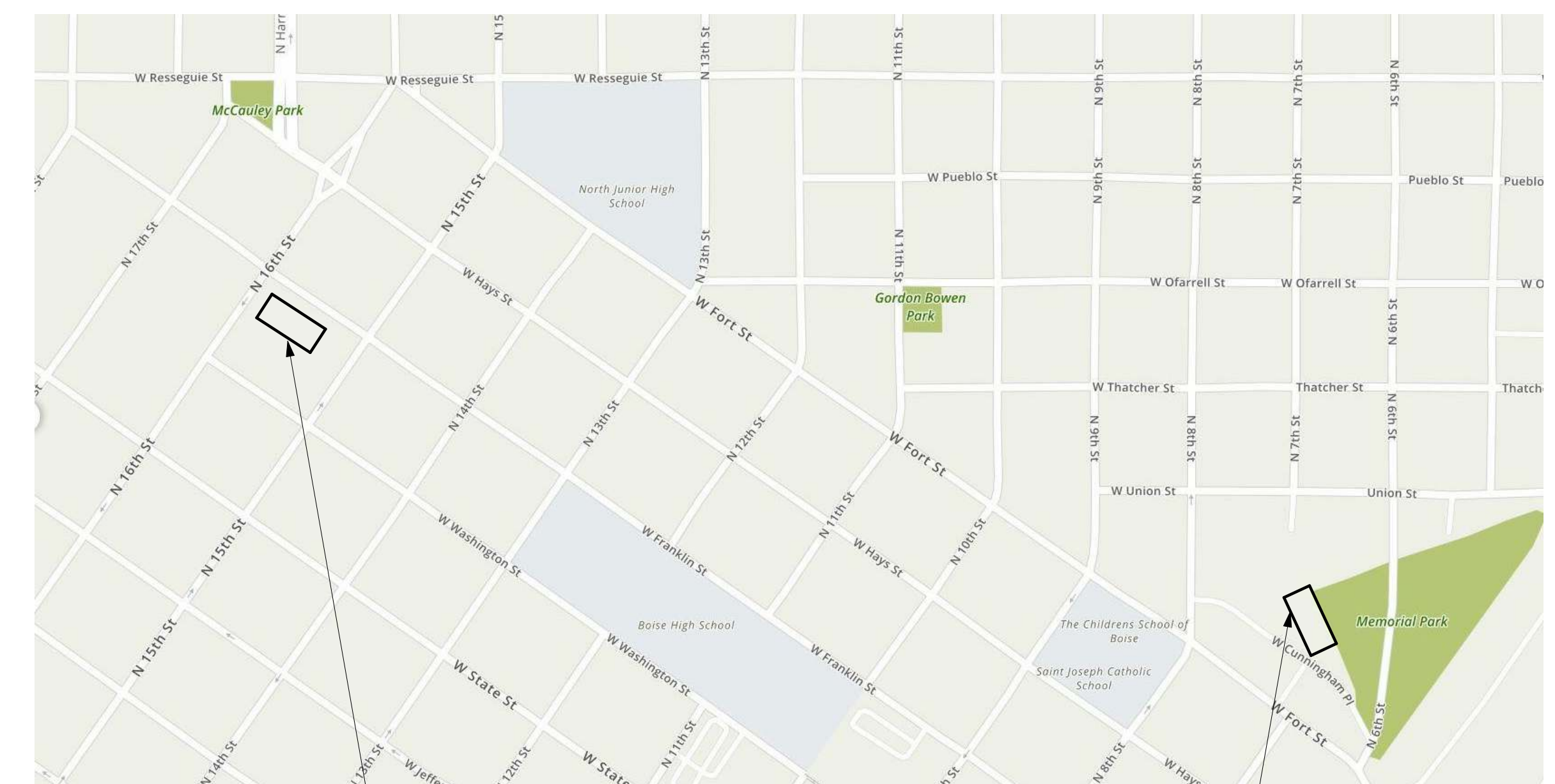
CLIENT:

BOISE CITY / ADA COUNTY HOUSING AUTHORITY

1001 S. ORCHARD
BOISE, ID. 83705

VICINITY MAP:

H.A. - JOB # 19017



FRANKLIN PLAZA

CAPITOL PLAZA

HUMMEL

A 2785 N. Bogus Basin Rd. Boise, ID 83702
P 208.343.7523 W www.hummelarch.com
F 208.343.0940

DRAWING INDEX:

- G0.00 COVER SHEET
- A2.01 FRANKLIN - FLOOR PLANS & WINDOW TYPES
- A2.02 CAPITOL - FLOOR PLANS & WINDOW/DOOR TYPES

APPLICABLE CODES

- 2015 IBC 2017 ISPC
- 2015 IEBC 2017 NEC
- 2015 IECC 2015 IFC

ENERGY COMPLIANCE

- U-VALUES
- WINDOWS ≤ .30
- DOORS ≤ .30

OUTLINE SCOPE OF WORK:

SCOPE OF WORK INVOLVES FRANKLIN AND CAPITOL PLAZAS. FRANKLIN PLAZA REPLACES INDICATED ALUMINUM WINDOW SYSTEMS WITH VINYL WINDOWS.

CAPITOL PLAZA REPLACES INDICATED ALUMINUM WINDOWS AND DOORS WITH ALUMINUM CLAD WOOD WINDOWS AND DOORS.

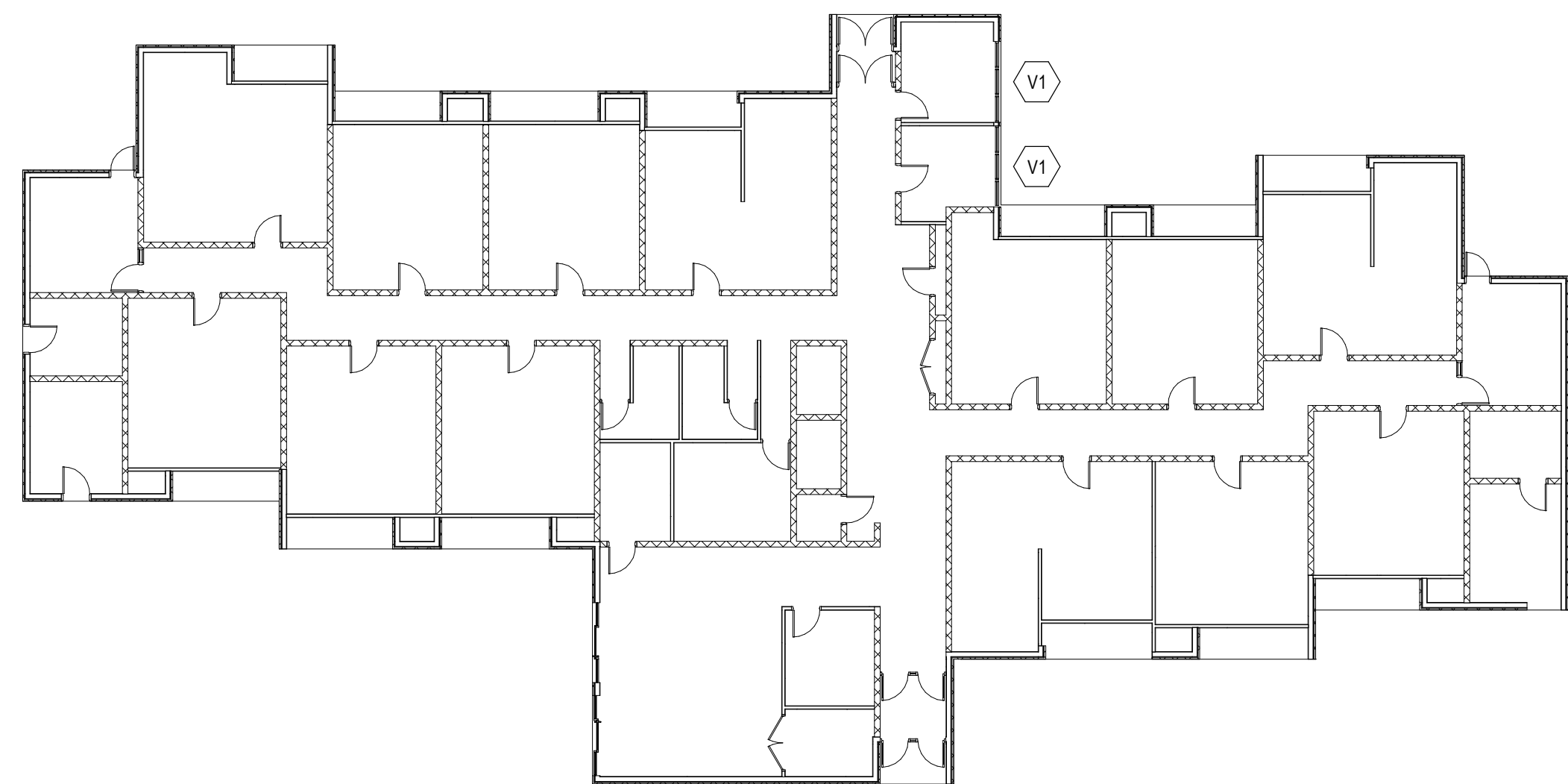
EXISTING WINDOW BLINDS AND ROLLER SHADES ARE TO BE REMOVED AND REINSTALLED. ADDITIONAL WORK REQUIREMENTS ARE IDENTIFIED IN THE SPECIFICATIONS.

THIS PROJECT IS FUNDED IN PART WITH FEDERAL DOLLARS. DAVIS BACON WAGE RATES APPLY.

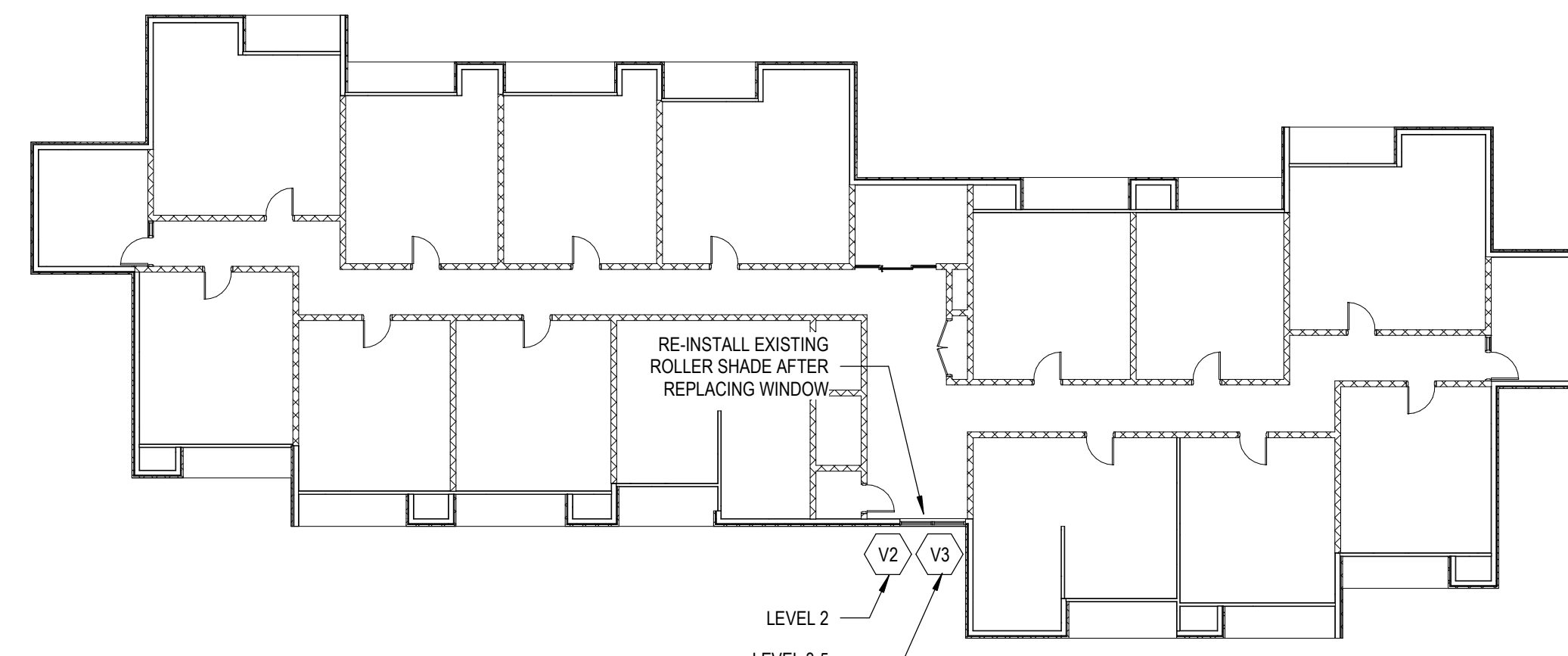
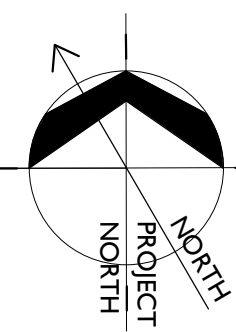
BID SET

DRAWING SET NO.

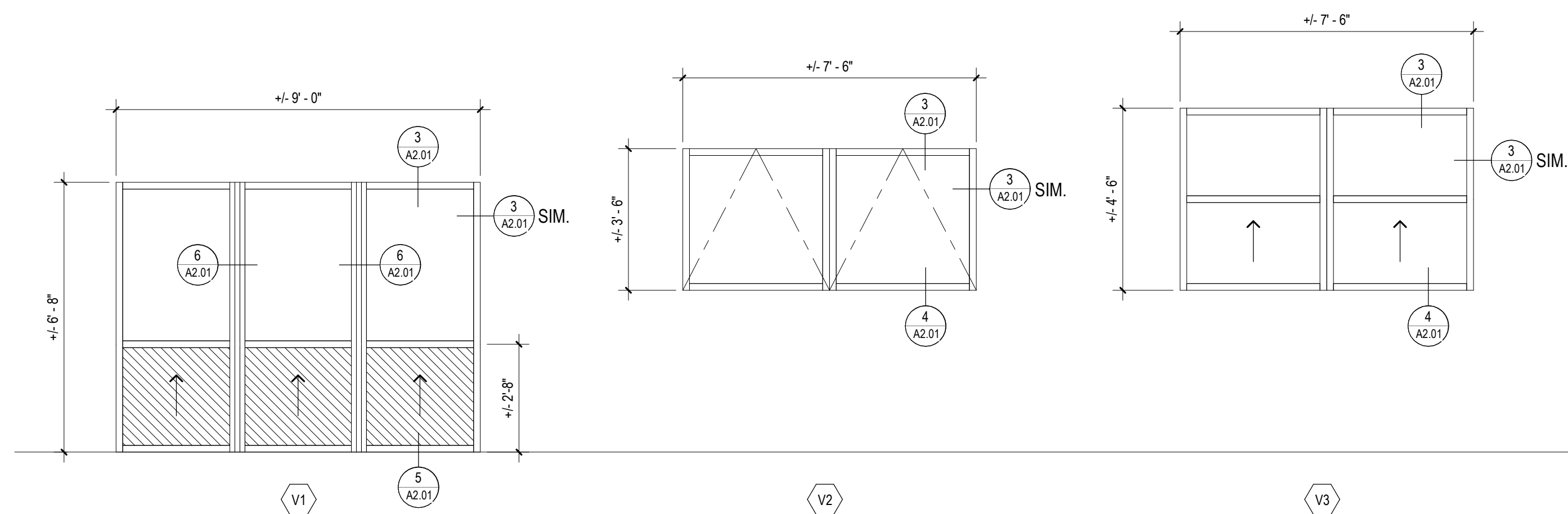
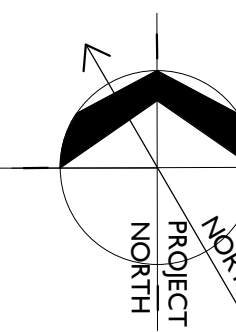




1 LEVEL 01 - FLOOR PLAN - FRANKLIN
A2.01 1/16" = 1'-0"

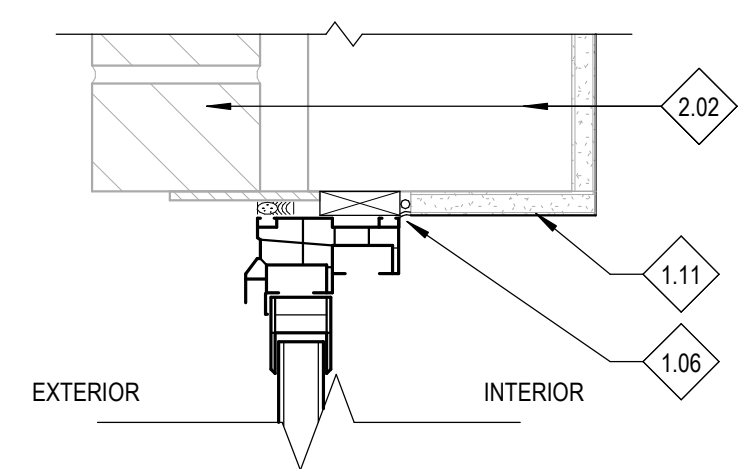


2 LEVEL 2-5 FLOOR PLANS - FRANKLIN
A2.01 1/16" = 1'-0"

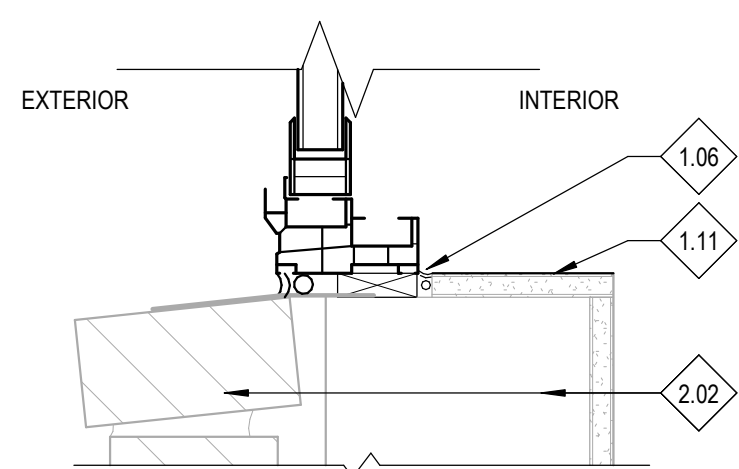


VINYL WINDOW TYPES
3/8" = 1'-0"

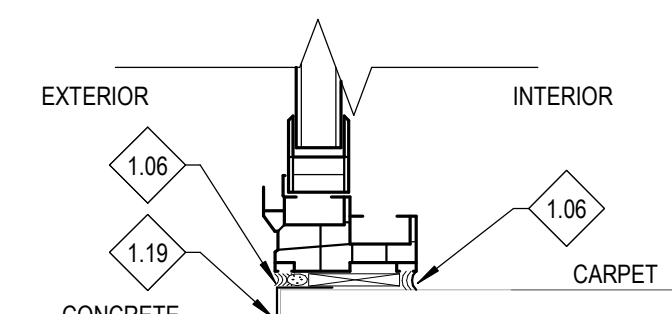
NOTE: (NAILING FINES ONLY AT V1 CENTER MULLION)



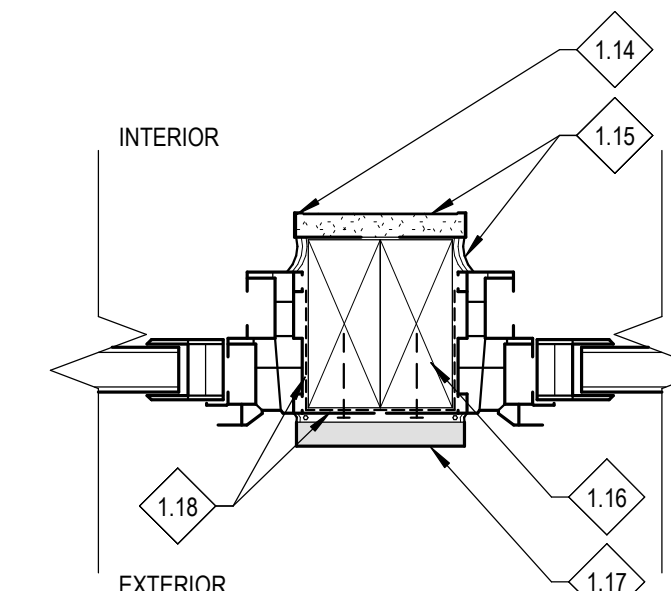
3 VINYL HEAD/JAMB (SIM)
A2.01 3" = 1'-0"



4 VINYL SILL DETAIL
A2.01 3" = 1'-0"



5 VINYL SILL AT FLOOR
A2.01 3" = 1'-0"



6 VINYL CENTER JAMB
A2.01 3" = 1'-0"

NOTE: DETAIL CUTS AT DOORS AND WINDOWS ARE TYPICAL AND GENERIC IN NATURE. FIELD VERIFY PRIOR TO FABRICATION.

REFERENCE NOTES

- 1.06 PROVIDE CONTINUOUS SEALANT AT PERIMETER OF ALL FRAMES.
- 1.11 TOUCH UP PAINT AND REPAIR ALL FINISHES TO LIKE NEW CONDITIONS MATCHING EXISTING, AT COMPLETION OF INSTALLATION
- 1.14 CONTINUOUS 'J' METAL, TYP.
- 1.15 PAINTED SHEETROCK ON INSIDE - SEAL PERIMETER WITH PAINTABLE SEALANT
- 1.16 (2) 2X4 SUPPORTS BETWEEN EACH WINDOW - TREATED WOOD
- 1.17 SMOOTH FINISH PAINTED FIBER-CEMENT BOARD TRIM. PAINT TO MATCH WINDOW COLOR.
- 1.18 FLEXIBLE FLASHING
- 1.19 METAL DRIP EDGE SILL FLASHING. COLOR TO MATCH DOORS
- 2.02 EXISTING BRICK VENEER

GENERAL NOTES

- 1. FLOOR PLAN LAYOUT AND WINDOW/DOOR INDICATIONS ARE BASED ON FIELD OBSERVATIONS AND MEASUREMENTS. THE FLOOR PLAN PRESENTS THE GENERAL NATURE OF THE SPACE AND THE CONTRACTOR SHALL FIELD VERIFY ALL DIMENSIONS AND CONDITIONS PRIOR TO CONSTRUCTION. MINOR VARIATIONS OCCUR IN THE SIZE AND PLACEMENT OF ASSEMBLIES WITHIN EACH UNIT.
- 2. CONTRACTOR SHALL COORDINATE HOURS OF WORK WITH THE BOISE CITY / ADA COUNTY HOUSING AUTHORITY. REFER TO SPECIFICATIONS FOR MORE DETAIL.
- 3. CONTRACTOR SHALL ERECT A DUST PROOF / WEATHER PROOF PARTITION TO PROTECT IN PLACE FURNITURE AND FINISHES DURING CONSTRUCTION AS REQUIRED.
- 4. TOUCH UP PAINT AND REPAIR ALL FINISHES TO LIKE NEW CONDITIONS MATCHING EXISTING, AT COMPLETION OF INSTALLATION.
- 5. WINDOW / DOOR ASSEMBLY DETAILS REPRESENT THE DESIGN INTENT
- 6. SIZE OF NEW WINDOWS/DOORS ARE TO MATCH EXISTING
- 7. REMOVE AND REINSTALL EXISTING WINDOW BLINDS. NOTIFY OWNER IF BLIND CONDITION PREVENTS REUSE
- 8. SEE SPECIFICATIONS FOR DESCRIPTION OF ALL ASSEMBLIES AND ADDITIONAL PROJECT REQUIREMENTS
- 9. THE CONTRACTOR MAY USE THE EXISTING COMMON PUBLIC TOILETS IN THE FACILITY DURING CONSTRUCTION.
- 10. DOOR SIZES CALLED OUT ARE NOMINAL DIMENSIONS AND EACH REPLACEMENT SIZE MUST BE FIELD VERIFIED, VARIATIONS IN SIZES DO OCCUR.
- 11. ALUMINUM CLAD WOOD WINDOWS AND DOORS ARE PREFINISHED WHITE PAINT ON INTERIOR SIDE.

LEGEND

- HATCH IN FRAME UNITS INDICATES AREAS OF FULLY-TEMPERED FLOAT GLASS.
- NO HATCH AREA IN FRAME UNITS INDICATES AREAS OF FLOAT GLASS.

HUMMEL
a: 2785 North Bogus Basin Road
Boise, Idaho 83702
p: 208/343.7523
f: 208/343.0940

Project:
FRANKLIN AND CAPITOL PLAZA WINDOW AND DOOR UPGRADE - PHASE IV
FRANKLIN PLAZA
1555 W. FRANKLIN ST.
BOISE, ID. 83702

CAPITOL PLAZA
700 CUNNINGHAM PL.
BOISE, ID. 83702

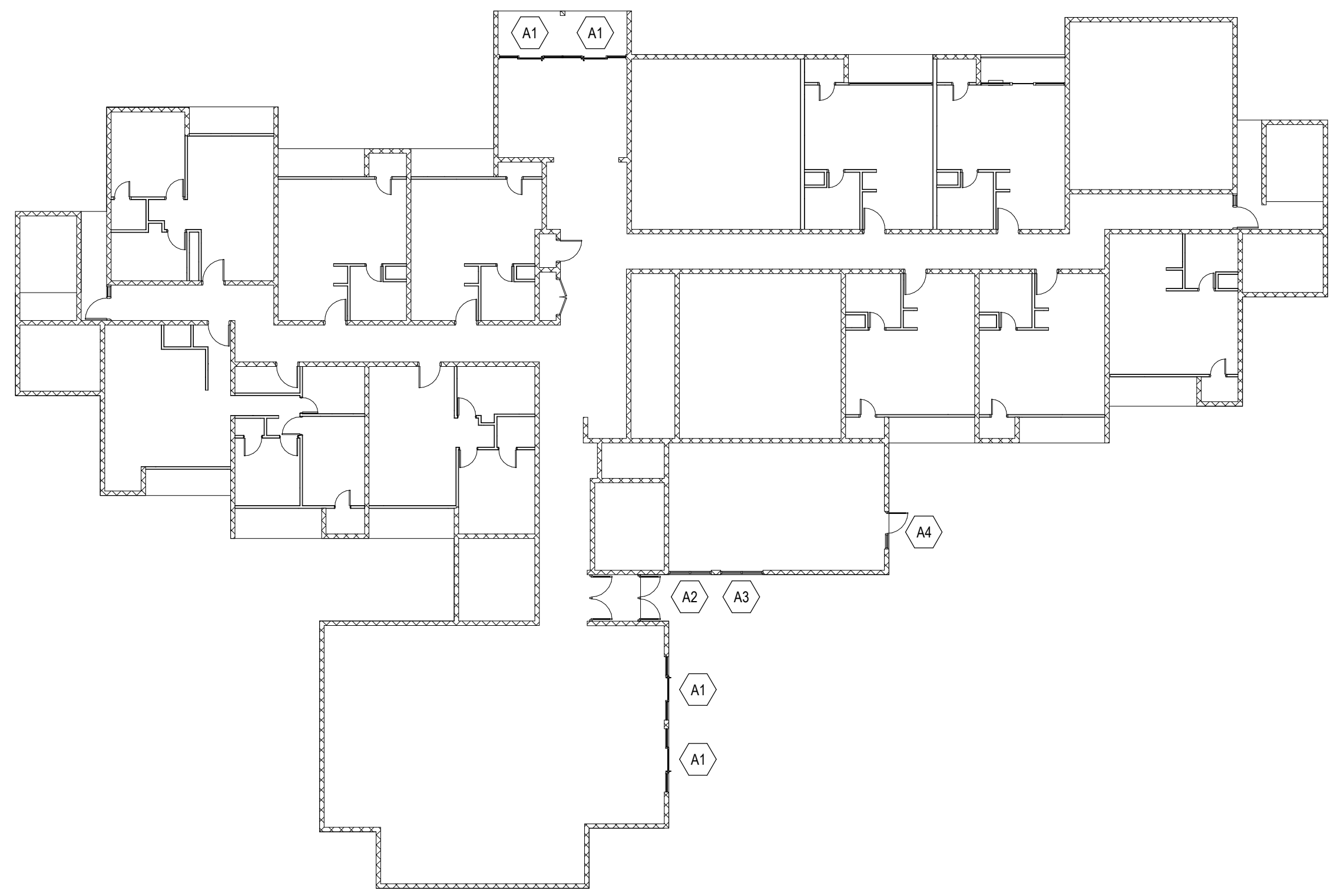
Sheet:
FRANKLIN - FLOOR PLANS & WINDOW/DOOR ELEVATIONS

BID SET

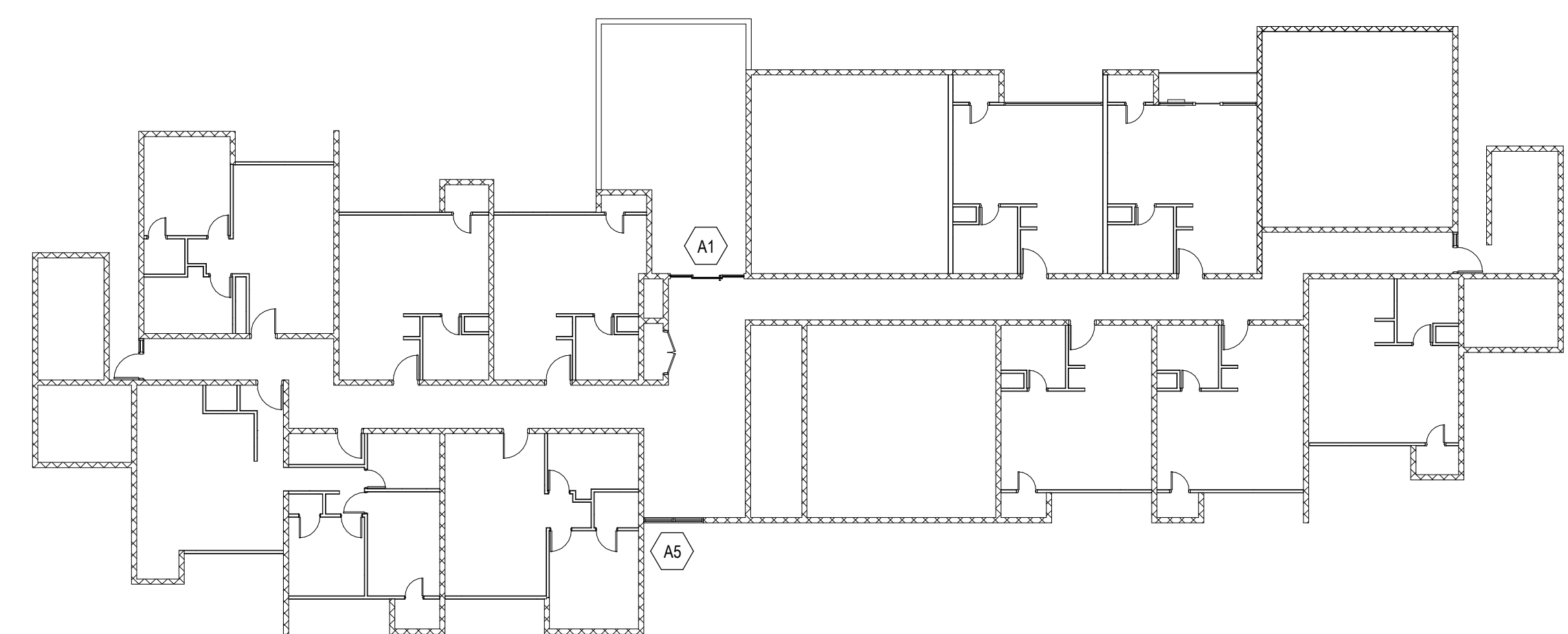
Revisions:

Project No: 19017
Drawn By: CC
Checked By: GA
Date: 07/17/2019

Sheet No: **A2.01**

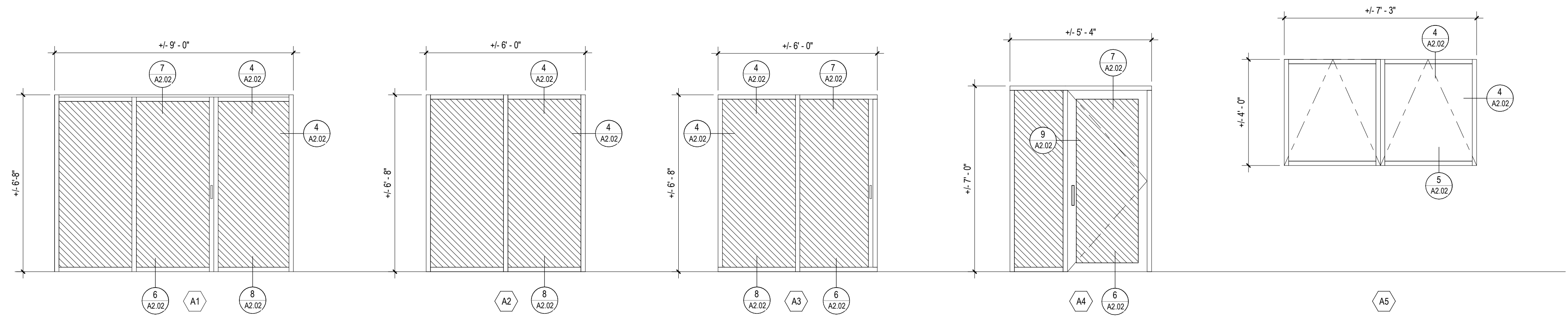


2 LEVEL 01 - FLOOR PLAN - CAPITOL
A2.02 1/16" = 1'-0"

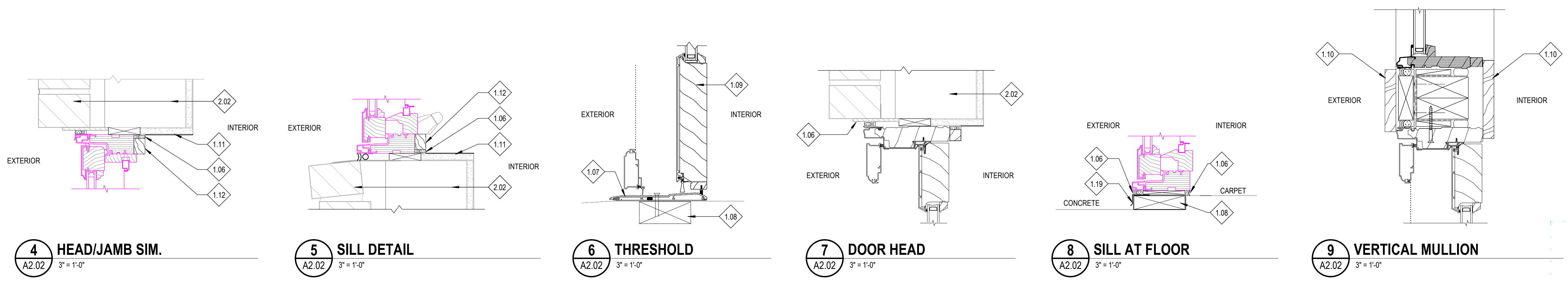


1 LEVEL 2-7 FLOOR PLANS - CAPITOL
A2.02 1/16" = 1'-0"

- REFERENCE NOTES**
- 1.06 PROVIDE CONTINUOUS SEALANT AT PERIMETER OF ALL FRAMES.
 - 1.07 ANCHOR THRESHOLD TO WOOD NAILER - SET IN FULL BED OF SEALANT
 - 1.08 TREATED NAILER REPLACES EXISTING
 - 1.09 ALUMINUM CLAD WOOD DOOR AS SPECIFIED
 - 1.10 PROVIDE PAINTED WOOD TRIM TO ACHIEVE FINISHED APPEARANCE AS SHOWN AT EXTERIOR AND INTERIOR. MATCH COLOR AT EXTERIOR. INTERIOR COLOR IS WHITE
 - 1.11 TOUCH UP PAINT AND REPAIR ALL FINISHES TO LIKE NEW CONDITIONS MATCHING EXISTING, AT COMPLETION OF INSTALLATION
 - 1.12 PROVIDE PAINTED TRIM AS REQUIRED
 - 1.19 METAL DRIP EDGE SILL FLASHING. COLOR TO MATCH DOORS
 - 2.02 EXISTING BRICK VENEER
- GENERAL NOTES**
1. FLOOR PLAN LAYOUT AND WINDOW/DOOR INDICATIONS ARE BASED ON FIELD OBSERVATIONS AND MEASUREMENTS. THE FLOOR PLAN PRESENTS THE GENERAL NATURE OF THE SPACE AND THE CONTRACTOR SHALL FIELD VERIFY ALL DIMENSIONS AND CONDITIONS PRIOR TO CONSTRUCTION. MINOR VARIATIONS OCCUR IN THE SIZE AND PLACEMENT OF ASSEMBLIES WITHIN EACH UNIT.
 2. CONTRACTOR SHALL COORDINATE HOURS OF WORK WITH THE BOISE CITY / ADA COUNTY HOUSING AUTHORITY. REFER TO SPECIFICATIONS FOR MORE DETAIL.
 3. CONTRACTOR SHALL ERECT A DUST PROOF / WEATHER PROOF PARTITION TO PROTECT IN PLACE FURNITURE AND FINISHES DURING CONSTRUCTION AS REQUIRED.
 4. TOUCH UP PAINT AND REPAIR ALL FINISHES TO LIKE NEW CONDITIONS MATCHING EXISTING, AT COMPLETION OF INSTALLATION.
 5. WINDOW / DOOR ASSEMBLY DETAILS REPRESENT THE DESIGN INTENT
 6. SIZE OF NEW WINDOWS/DOORS ARE TO MATCH EXISTING.
 7. REMOVE AND REINSTALL EXISTING WINDOW BLINDS. NOTIFY OWNER IF BLIND CONDITION PREVENTS REUSE
 8. SEE SPECIFICATIONS FOR DESCRIPTION OF ALL ASSEMBLIES AND ADDITIONAL PROJECT REQUIREMENTS
 9. THE CONTRACTOR MAY USE THE EXISTING COMMON PUBLIC TOILETS IN THE FACILITY DURING CONSTRUCTION.
 10. DOOR SIZES CALLED OUT ARE NOMINAL DIMENSIONS AND EACH REPLACEMENT SIZE MUST BE FIELD VERIFIED. VARIATIONS IN SIZES DO OCCUR.
 11. ALUMINUM CLAD WOOD WINDOWS AND DOORS ARE PREFINISHED WHITE PAINT ON INTERIOR SIDE.
- LEGEND**
- HATCH IN FRAME UNITS INDICATES AREAS OF FULLY-TEMPERED FLOAT GLASS.
 - NO HATCH AREA IN FRAME UNITS INDICATES AREAS OF FLOAT GLASS.



WINDOW AND DOOR TYPES - 1
3/8" = 1'-0"



4 HEAD/JAMB SIM.
A2.02 3" = 1'-0"

5 SILL DETAIL
A2.02 3" = 1'-0"

6 THRESHOLD
A2.02 3" = 1'-0"

7 DOOR HEAD
A2.02 3" = 1'-0"

8 SILL AT FLOOR
A2.02 3" = 1'-0"

9 VERTICAL MULLION
A2.02 3" = 1'-0"

NOTE: DETAIL CUTS AT DOORS AND WINDOWS ARE TYPICAL AND GENERIC IN NATURE. FIELD VERIFY PRIOR TO FABRICATION.

HUMMEL
a: 2785 North Bogus Basin Road
Boise, Idaho 83702
p: 208/343.7523
f: 208/343.0940

Project:
**FRANKLIN AND CAPITOL
PLAZA WINDOW AND DOOR
UPGRADE - PHASE IV**
FRANKLIN PLAZA
1555 W. FRANKLIN ST.
BOISE, ID. 83702

CAPITOL PLAZA
700 CUNNINGHAM PL.
BOISE, ID. 83702

Sheet:
**CAPITOL - FLOOR PLANS &
WINDOW/DOOR ELEVATIONS**

BID SET

Revisions: Δ

Project No: 19017
Drawn By: CC
Checked By: GA
Date: 07/17/2019

Sheet No: **A2.02**

H:\19017-00 Franklin and Capitol Window and Door Upgrade\02 Drawings\01 Models\19017-Franklin and Capitol Window and Door Upgrade.rvt